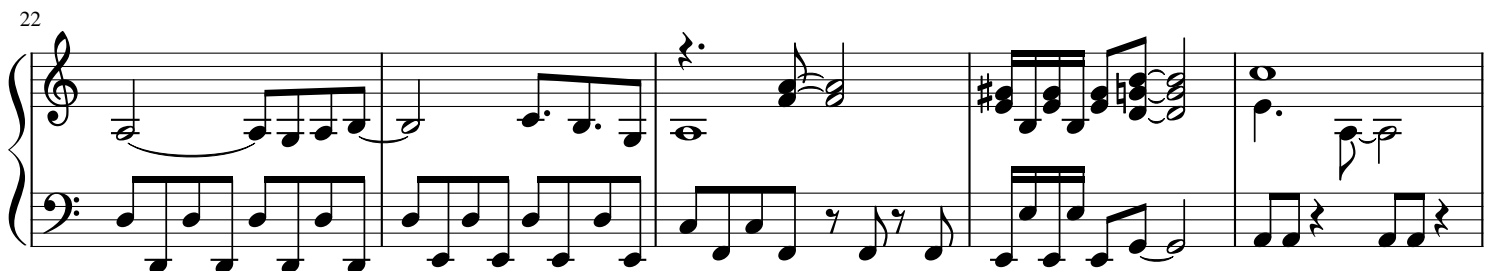
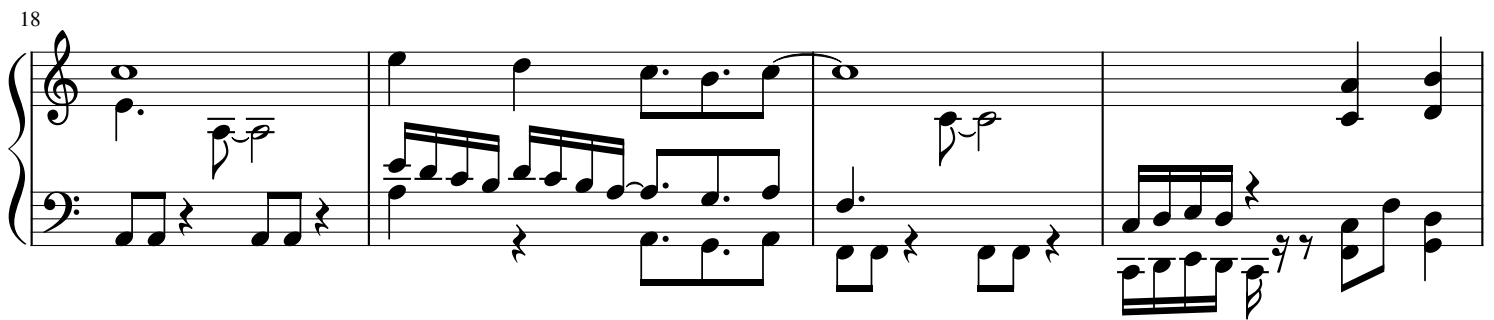
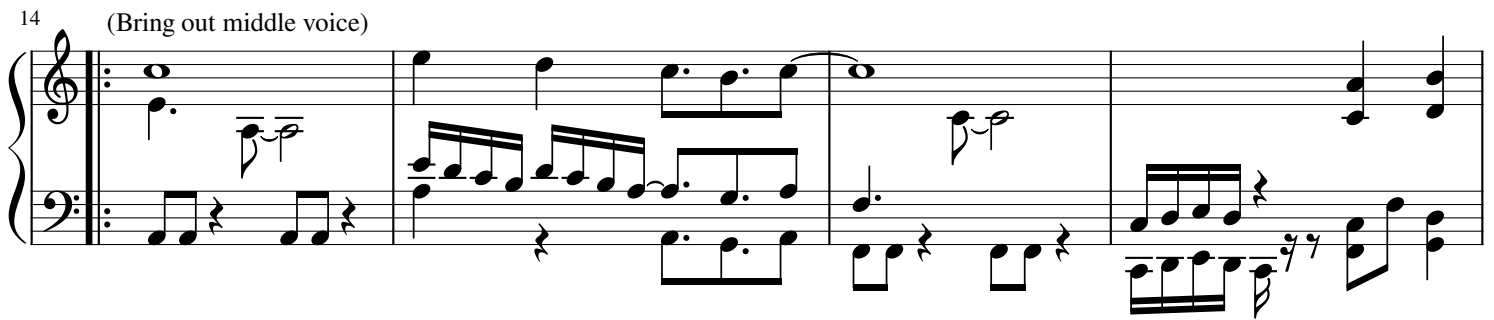
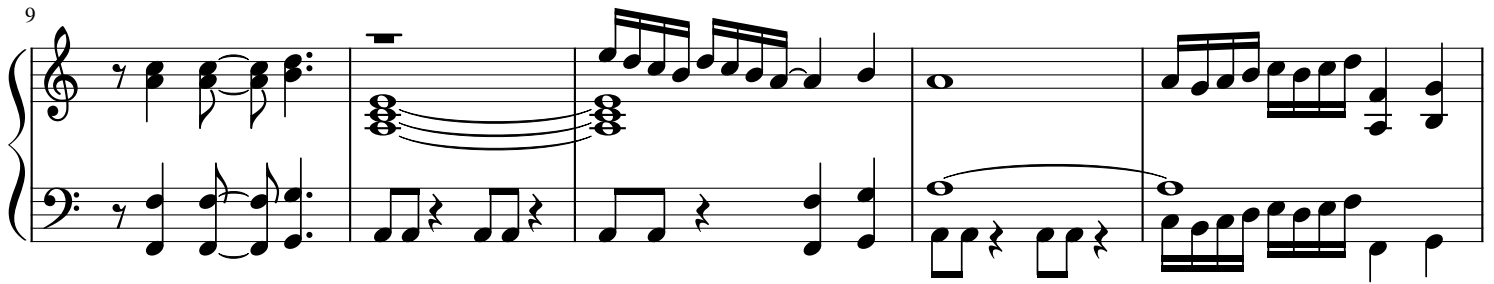


Stranger~Wandering Swordsman

from "Brandish II"

Falcom Sound Team JDK

arr. Mark Andrews



27

System 1, measures 27-30. The music is in 2/4 time. The right hand features a melody with eighth and quarter notes, while the left hand provides a rhythmic accompaniment with eighth and quarter notes. Measure 27 starts with a treble clef and a key signature of one sharp (F#). Measure 28 has a whole note chord in the right hand and a half note in the left. Measure 29 has a half note in the right hand and a half note in the left. Measure 30 has a whole note chord in the right hand and a half note in the left.

31

System 2, measures 31-34. The music continues in 2/4 time. The right hand features a melody with eighth and quarter notes, while the left hand provides a rhythmic accompaniment with eighth and quarter notes. Measure 31 starts with a treble clef and a key signature of one sharp (F#). Measure 32 has a whole note chord in the right hand and a half note in the left. Measure 33 has a half note in the right hand and a half note in the left. Measure 34 has a whole note chord in the right hand and a half note in the left.

35

System 3, measures 35-39. The music continues in 2/4 time. The right hand features a melody with eighth and quarter notes, while the left hand provides a rhythmic accompaniment with eighth and quarter notes. Measure 35 starts with a treble clef and a key signature of one sharp (F#). Measure 36 has a whole note chord in the right hand and a half note in the left. Measure 37 has a half note in the right hand and a half note in the left. Measure 38 has a whole note chord in the right hand and a half note in the left. Measure 39 has a whole note chord in the right hand and a half note in the left.

40

System 4, measures 40-43. The music continues in 2/4 time. The right hand features a melody with eighth and quarter notes, while the left hand provides a rhythmic accompaniment with eighth and quarter notes. Measure 40 starts with a treble clef and a key signature of one sharp (F#). Measure 41 has a whole note chord in the right hand and a half note in the left. Measure 42 has a half note in the right hand and a half note in the left. Measure 43 has a whole note chord in the right hand and a half note in the left.

44

System 5, measures 44-47. The music continues in 2/4 time. The right hand features a melody with eighth and quarter notes, while the left hand provides a rhythmic accompaniment with eighth and quarter notes. Measure 44 starts with a treble clef and a key signature of one sharp (F#). Measure 45 has a whole note chord in the right hand and a half note in the left. Measure 46 has a half note in the right hand and a half note in the left. Measure 47 has a whole note chord in the right hand and a half note in the left.

48

51

55

1.

59

2.

63